

THE
BRICK
STORE



20 BRICK BUILDINGS

2021-22

IN INDIA



COVERPAGE: THE V HOUSE | THE BRICK TALKS | PHOTOGRAPHY: NILKANTH BHARUCHA

E-BOOK
DIGITAL COPY

 THE
ARCHITECT'S
DIARY.COM

INDEX

BRICK BUILDINGS IN INDIA 2022



INDEX

BRICK BUILDINGS IN INDIA 2022



INDEX

BRICK BUILDINGS IN INDIA 2022



NOTE



The usage of brick dates back to 7000 BC. After being recognized as one of the oldest known construction materials, it kept on establishing and proving itself so well that it retains its pristineness even today. Something that the cultures around the world kept on recouping and experimenting upon! It is symbolic of its earthiness, belonging, vernacularity and speaks oodles of its regionalism and diversities. 'Even a brick wants to be something', quoted Louis Khan, and indeed, seems like it has become more than everything it ever was!

Indians have a close connection with the bricks too. The contemporary architects have been loving it and have diversified its use beyond boundaries. It trespasses all its limitations. Designers have adopted its non load bearing versions as stuccos and other exposed variants delivering timeless pieces of architecture.

With this E-book we believe to bring this raw earthiness to your homes and your further design palettes. This is what will break the approach from monotone and will lead towards a distinctive liveliness adding more words to your design language.



SIDDHARTH BHAYANI

FOUNDER-DIRECTOR

WWW.THEARCHITECTSDIARY.COM

SYMBIOSIS UNIVERSITY

DESIGNED BY IMK ARCHITECTS

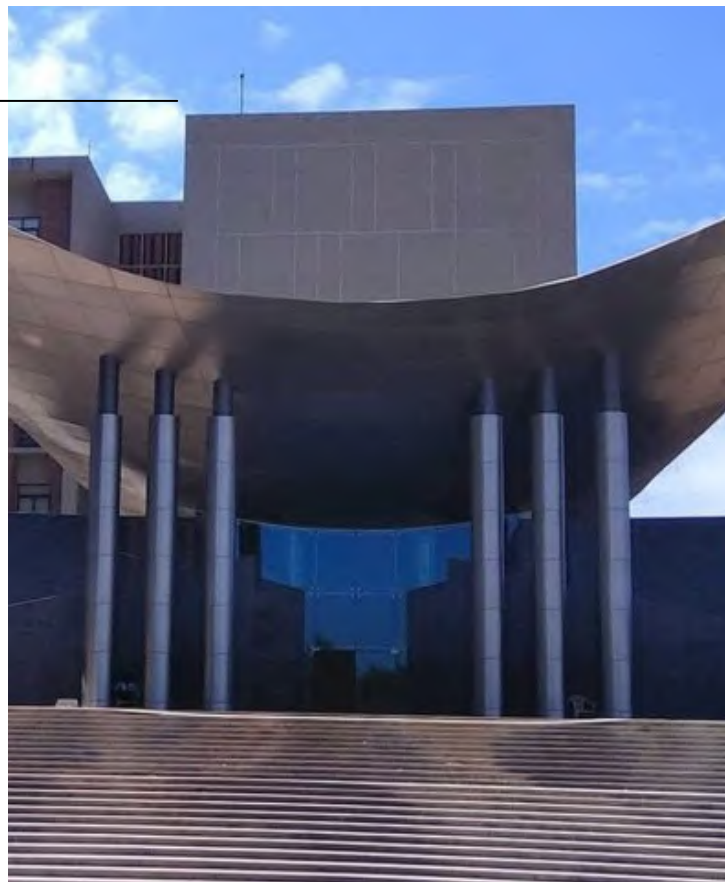




EXTERIOR

STATE OF THE ART

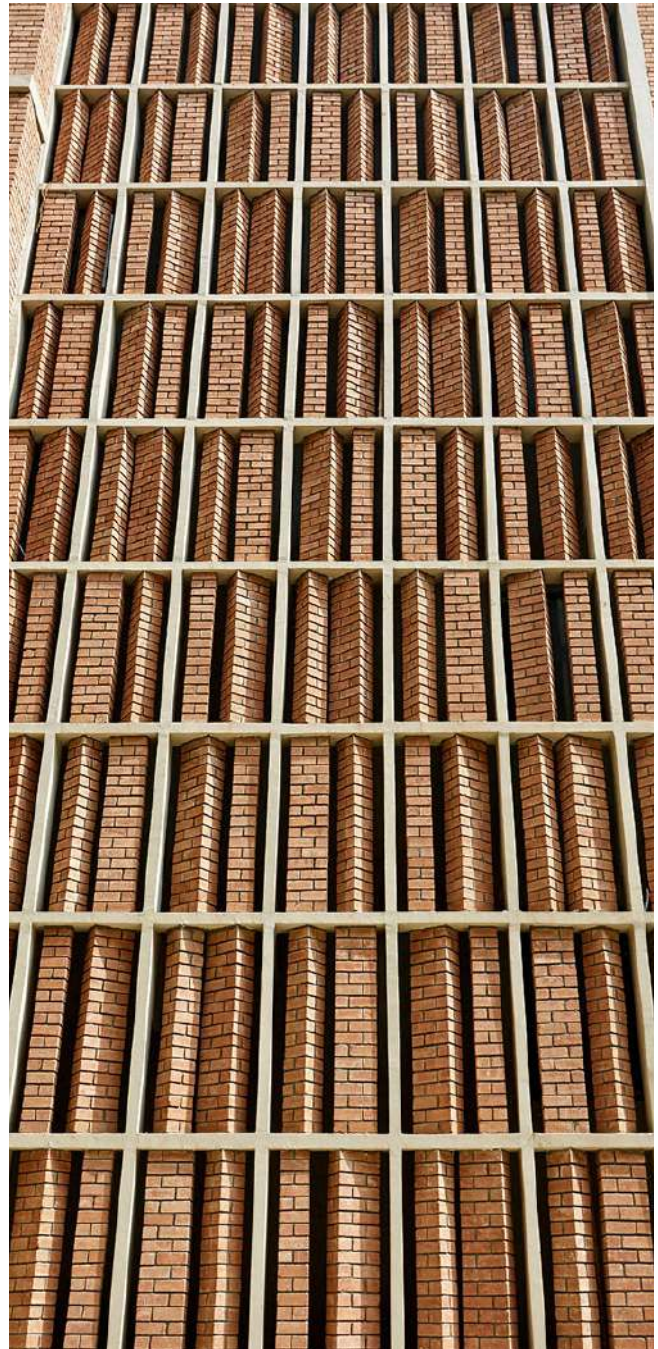
SUHRC has been developed on a forested hill, in a discrete and quiet location. Envisaged as a Multi-Specialty Hospital to provide excellent health care facilities and a State of the art - Centre that would enhance Skill development in the Field of Medicine. Conceptualized to cater to the needs of all the stakeholders, the hospital caters to the nearby population of Pune and its neighboring areas, while providing Tele-Medicine services to ensure outreach services to peripheral, far-flung, and access-compromised settlements.



FACADE

THE FLEXIBLE GRID DESIGN

Where post-tensioned slabs are used to achieve flexibility, minimum beams, and larger spans that facilitate different size room arrangements and to allow for easy routing of ducts. The flexible grid is designed to synchronize the structural system at all levels. To enable a natural, original, and permanent finish on the building, which would be maintenance-free, brick was adopted as the material of choice for the double skin on the façade with deeper shading projections that would reduce heat gain.



ENTRANCE

OPEN-TO-SKY COURTYARD

While the entry to the hospital is welcoming, peaceful, it also provides a sense of grandeur along with a structure that expresses Solidarity, resonating care, and shelter for the patients in distress. A large open-to-sky courtyard separates the Centre from the hospital. The entrances for both these blocks lie on either side of the building, making them seem like two completely different entities, providing the students with different access as well as a space for them for relaxation and academic purposes.



RECEPTION, BEDROOM & CORRIDORS

*DESIGNED WITH WARMER AND
SUBTLE HUES OF COLORS*



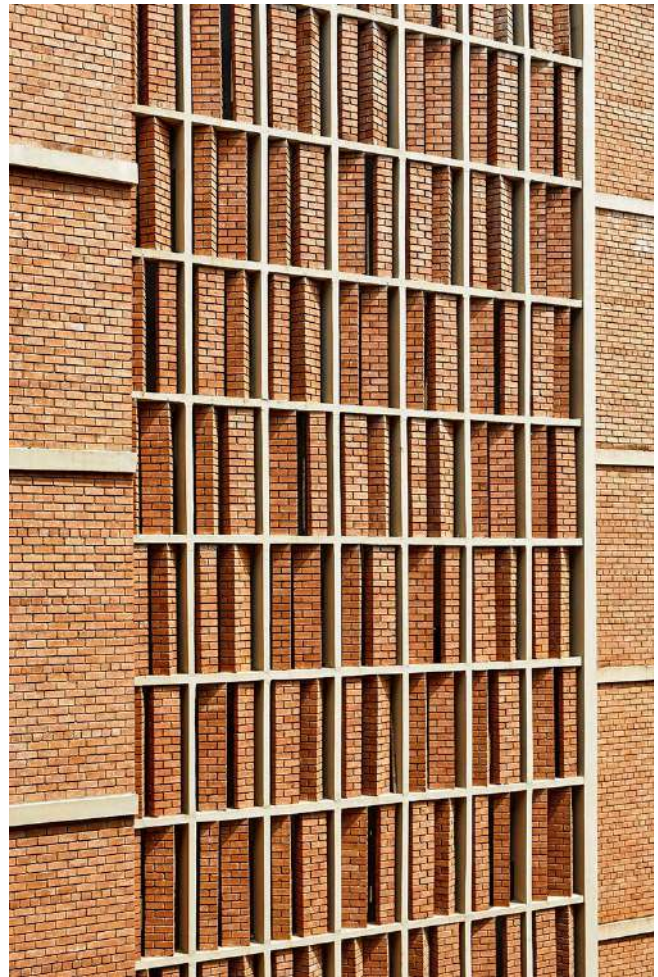
The assortment of spaces and critical areas such as ICU's are endowed with light colors of soothing shades to reduce anxiety. To maintain a warm and tranquil environment for patients, soft home-like colors cover the inner walls of the hospital. The ward rooms are designed with warmer and subtle hues of colors that are complemented with teak laminates. Acoustic materials in the ceilings of corridors and rooms reduce noise pollution and provide easy access to services. Encouraging way-finding, the nurse stations are highlighted with shades of warm yellow/orange to be identifiable from any side of the long corridor.

EXTERIOR

THE BRICK-ART AND THE EXPOSED
CONCRETE

Carefully and strategically planned, the building attempts to make gestures that are grand, yet local and responsive with attention to details such as the brick-art and the exposed concrete. Sitting comfortably on the fringe of the hill, the inner courtyards seem like a continuation of the hill, where the built form amalgamates with the site. Allowing nature to be a part of the hospital and integrating it as a comforting element for the patients, the hospital creates a space for recovery and rejuvenation.





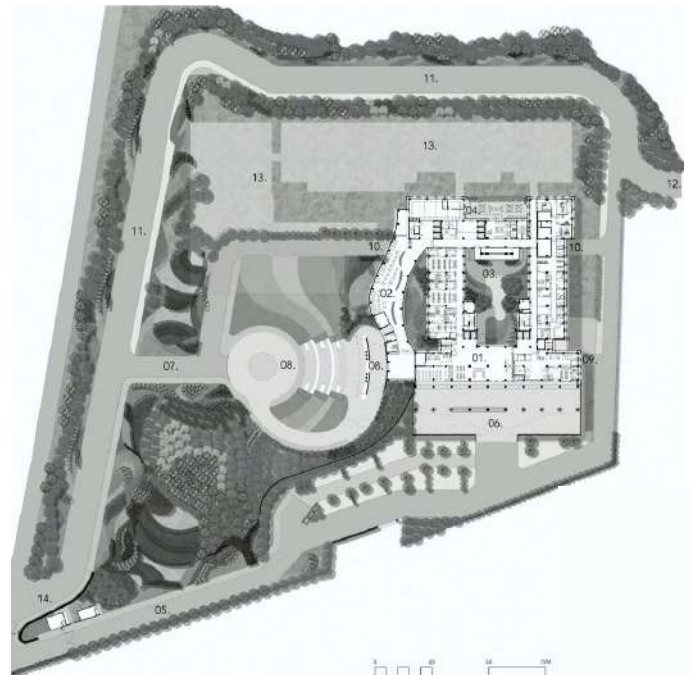
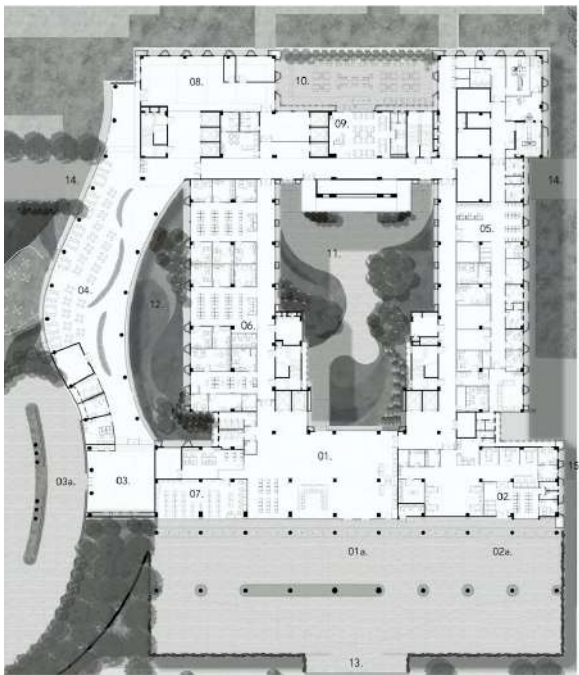
RAHUL KADRI
PRINCIPAL ARCHITECT

IMK ARCHITECTS

SUHRG HAS BEEN DEVELOPED ON A FORESTED HILL, IN A DISCRETE AND QUIET LOCATION. ENVISAGED AS A MULTI-SPECIALTY HOSPITAL TO PROVIDE EXCELLENT HEALTH CARE FACILITIES AND A STATE OF THE ART - CENTRE THAT WOULD ENHANCE SKILL DEVELOPMENT IN THE FIELD OF MEDICINE, THE DEVELOPMENT ENVISIONS TO EDUCATE AND EMPOWER MEDICAL STUDENTS. CONCEPTUALIZED TO CATER TO THE NEEDS OF ALL THE STAKEHOLDERS







DESIGN BY: IMK ARCHITECTS
PROJECT NAME: SYMBIOSIS UNIVERSITY
CITY : LAVALE

PHOTOGRAPHER: MR. RAJESH VORA
AREA: 4,49,930 FT²
YEAR COMPLETED: 2020